

Asset Tracking for Healthcare

Vision Technologies, along with CenTrak® Elpas Series and Aruba, deliver active RFID/RTLS healthcare solutions for the protection and visibility of patients, staff and assets. The comprehensive range of solutions consist of infant protection, staff utilization, medical equipment management and wireless emergency call solutions for healthcare organizations. The advanced field-proven solutions can suit every requirement, whether it be a large hospital or small nursing home where the real-time identification and location of staff, patients and assets are mission critical. The result: enhanced workflow, improved patient care and safety, improved resource utilization, audit trails to meet regulatory compliance and an overall reduction of operating costs.

One Solution, Multiple Applications. CenTrak® uses Triple Technology, Active Radio Frequency Identification (RFID), Real-time Location Systems (RTLS) and Passive RFID to deliver Asset Management, Physical Access Safety, Security and Visibility products and solutions. CenTrak® can utilize Aruba access points.






Aruba's Meridian asset tracking solution helps increase staff efficiency, reduce equipment costs and improve customer satisfaction by leveraging Aruba's location-ready WLAN infrastructure and Bluetooth Low Energy (BLE-based) tags. The application is sold separately.

Identify, Locate & Track patients, guests, staff, and medical devices throughout your healthcare facility or campus.

RFID/RTLS Solutions:

- ▶ Asset Management
- ▶ Infant Protection
- ▶ Temperature Monitoring
- ▶ Hand Hygiene
- ▶ Staff Duress Call
- ▶ Elopement Prevention
- ▶ Nurse Call Integration
- ▶ Patient Flow

SPECIALIZING IN

-  **Integrated Technology Delivery**
-  **Audio-Visual Systems**
-  **Internet of Things (IoT)**
-  **Network Infrastructure**
-  **Security Systems**
-  **Professional Services**
-  **Wireless**



a Hewlett Packard
Enterprise company

GSA Contract Holder

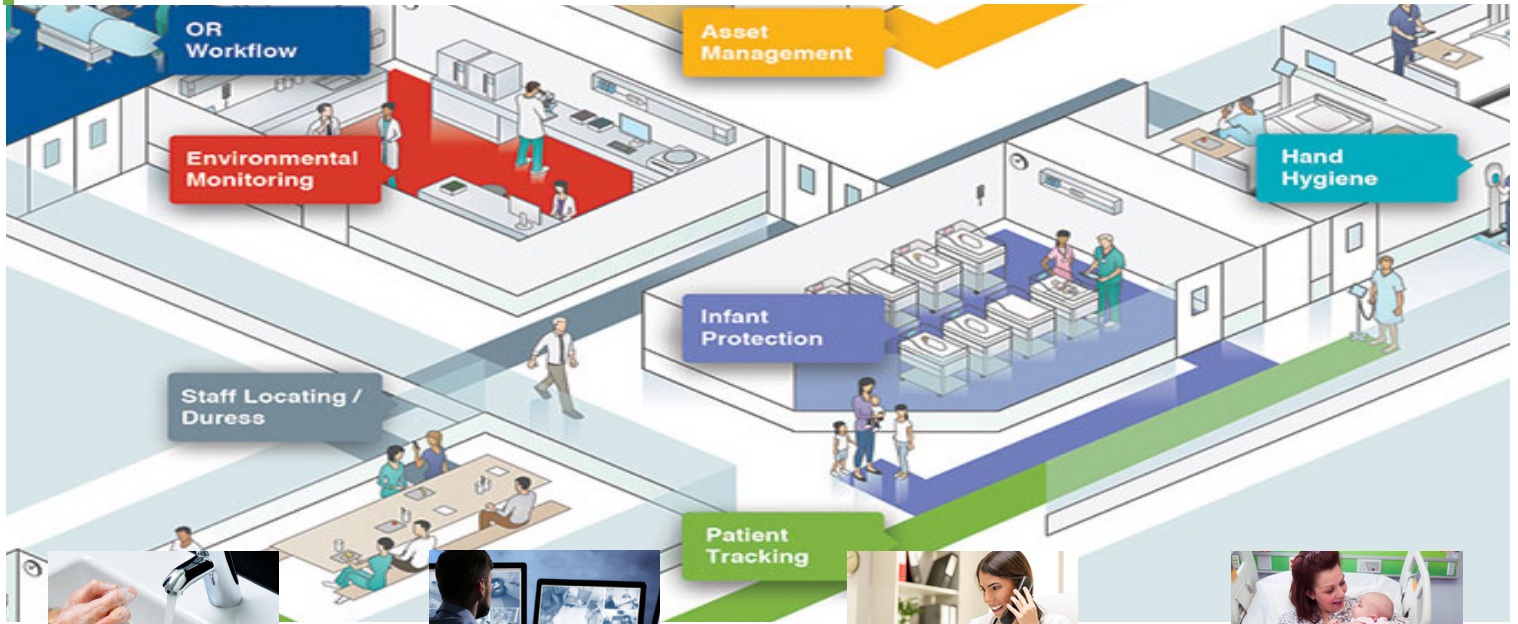
GSA Schedule 70 Contract # GS-35F-0581R
GSA Schedule 84 Contract # GS-07F-161DA
VA DCJS No. 11-5523



**CONTACT US TODAY FOR DESIGN, BUILD, INSTALLATION,
AND SUPPORT SERVICES:**

 visiontechnologies.com  866.746.1122

Asset Tracking for Healthcare Solutions



Hand Hygiene Monitoring

- ▶ Reduces rate of health-care acquired infections
- ▶ Monitors adherence to hygiene compliance policies
- ▶ Generates reports per caregiver/examination room
- ▶ Helps identify the source of an infection outbreak



Hospital Staff Protection

- ▶ Protects lone workers & employees at risk
- ▶ Enables staff members to feel safe and secure
- ▶ Supports hard-wired or wireless call-points



Medical Asset Management

- ▶ Enhances asset optimization prevents asset shrinkage
- ▶ Streamlines workflow; reduces operating costs
- ▶ Improves regulation compliance



Infant Protection

- ▶ Guards against abductions & mother/baby mismatches
- ▶ Enforces accountable match test discharge procedure
- ▶ Prevents unauthorized movements or transfers of infants
- ▶ Continuous baby supervision
- ▶ Provides peace of mind for parents & maternity staff



Wandering Patient Protection

- ▶ Protects against patient wandering or elopement
- ▶ Maintains patients' freedom/independence
- ▶ Continuous patient supervision
- ▶ Provides peace of mind for families & medical staff



Wireless Nurse Call

- ▶ Protects patients anywhere in the facility
- ▶ Enables patients to feel safe & secure
- ▶ Streamlines workflow; reduces operating costs
- ▶ Generates staff-specific patient call logs



Wireless Temperature Monitoring

- ▶ Monitors assets/environments that require temperature range compliance
- ▶ Prevents spoilage of temperature sensitive assets
- ▶ Reduces labor costs associated with manual monitoring & logging procedures

Request Vision's Asset Tracking and RTLS case study, or a demo in real-time, to learn how asset tracking integrates with other technologies.

CONTACT US TODAY FOR DESIGN, BUILD, INSTALLATION, AND SUPPORT SERVICES: