

ZKTeco Touchless Reader

SpeedFace & Palm Access Control Reader + Body Temperature & Mask Detection

The SpeedFace+ embedded face & palm recognition sensor provides 100% hands-free hygienic user authentication for various applications including Access Control, Time & Attendance, Visitor Management, Event Management & more.

Model SF1008+ can store and match up to 50,000 faces in less than 0.3 seconds while operating in both total darkness and bright sunlight (up to 50,000 Lux).

SpeedFace+ is a series of high performance face, palm and fingerprint recognition readers that additionally detect if a person has a high body temperature and is wearing a protective mask.

Body Temperature & Mask Detection

In addition to providing face, palm, and fingerprint user authentication, SpeedFace+ series also provides fast and accurate body-temperature measurement and detects if a protective mask is being worn. Users can be denied door access if a high body-temperature or no mask is detected.

Identifying users having high body-temperature or not wearing a mask greatly helps prevent the spread of germs especially in hospitals, airports, schools, commercial office buildings and other public meeting areas. Users having high body-temperature and their supervisors can then take the necessary health precautions, accordingly.

SpeedFace+ combines a powerful embedded thermal camera and ZKTeco's latest face, palm and fingerprint recognition algorithms that are supported by an optimized dual-core processor. SpeedFace+ is unmatched in accuracy, matching-speed, and versatility. It provides advanced security and convenience, all on a single affordable device.

**CONTACT US TODAY FOR DESIGN, BUILD, INSTALLATION,
AND SUPPORT SERVICES:**

 visiontechnologies.com  866.746.1122

FEATURES

ZKTeco



Face
Reader



Palm
Reader



Temperature
Detection



Mask
Detection

ZKTECO MODELS



Model SF1005-V+

Model SF1008+

GSA Contract Holder

GSA Connections II Contract # GS00Q12NSD0011
GSA Schedule 70 Contract # GS-35F-0581R
GSA Schedule 84 Contract # GS-07F-161DA
A Service-Disabled Veteran Owned Business
VA DCJS No. 11-552



VISION TECHNOLOGIES
MAKING VISION REALITY

FEATURES:

- User authentication read range up to 8 feet
- Model SF1008+ stores & matches up to 50,000 face templates (SF1005-V+: 6,000 face templates)
- Face verification possible while wearing protective mask (Palm recognition advised while wearing mask)
- Both models store & match up to 5,000 palm templates
- Model SF1005-V+ additionally stores and matches up to 10,000 fingerprint templates
- Model SF1008+ has an 8" programmable touchscreen display (SF1005-V+ has a 5" display)
- Intelligent energy-saving design
- Dual-lens IR & VL camera recognizes faces in both total darkness and bright sunlight (<50,000 Lux)
- Body-temperature detection accurate up to 0.6° F from up to 18 inches away

SPECIFICATIONS:

Capacity (model SF1008+)
Faces: 50,000 | Palms: 5,000

Capacity (model SF1005-V+)
Faces: 6,000 | Palms: 5,000
Fingerprints: 10,000

Compatibility

Wiegand Input Panels
Wiegand Output readers
ZKBioSecurity Software
ZKTeco Security Relay Box (SRB)

Hardware

900 MHz Dual Core CPU
512MB RAM/ 8G Flash
8" or 5" Touch Screen Display
2MP WDR Camera
Distance Detection Sensor
Reset Button & Tamper Switch

Access Control Interface

Lock Relay Output
Alarm Output / Auxiliary Input
Exit Button / Door Sensor

Special Functions

0.3s Face Recognition Speed
Liveness Detection
Event Snapshot

Standard Functions

Access Levels, Groups, Holidays,
DST, Duress Mode (password),
Anti-Passback, Record Query,
Tamper Switch Alarm

Temperature Detection

Temperature Accuracy: +/- 0.6°F
Temperature Distance: 18 inches
Protective Mask Detection

Communication

TCP / IP
RS232/485
Wiegand Input / Output

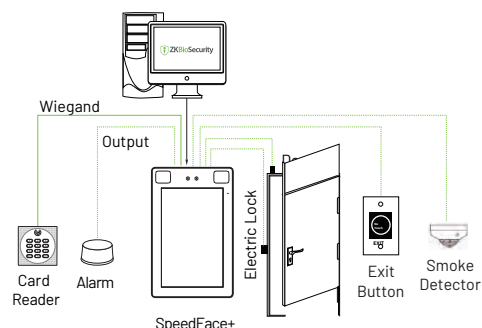
Additional Info

Face Algorithm: ZKLiveFace 5.8
Working Temp: -22°F to 140°F
Easily change display from °F to °C
Working Humidity: ≤ 93%
Storage Temp: - 40°F to 169°F
Storage Humidity: ≤ 93%
Net Weight: 1.5 lbs
Size (HxLxD): 8.9 x 5.6 x 1 inch

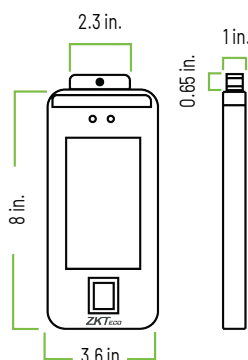
Power

Operating Voltage: 12V DC
Current Draw: < 2,000mA

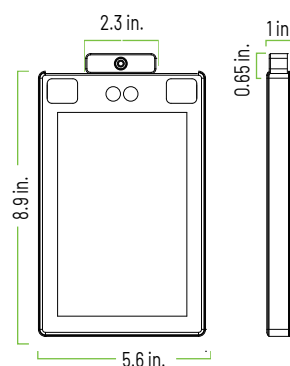
CONFIGURATION:



DIMENSIONS:



Model SF1005-V+



Model SF1008+

ZKTeco USA

1600 Union Hill Rd., Alpharetta GA 30005

Phone: (862) 505 - 2101 • Fax: (862) 204 - 5906 • sales@zktecousa.com • www.zktecousa.com

© Copyright 2020, ZKTeco Inc. ZKTeco Logo and ZKTeco USA Logo have registered trademarks of ZKTeco or a related company.

All other product and company names mentioned are used for identification purposes only and maybe trademarks of their respective owners.

All specifications are subject to change without notice. All rights reserved.